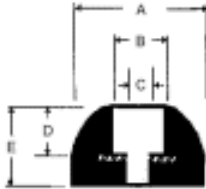


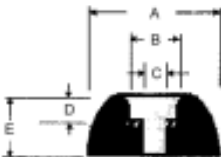
"W" Suffix Denotes Washer Insert

ROUNDED TOP



Part No.	A Outside Dia.	B Recess Width	C Bore Dia.	D Recess Depth	E Total Height
IPA-1925-W	7/16	1/4	1/8	5/32	1/4
IPA-366	1/2	1/4	3/32	5/32	1/4
IPA-366-W	1/2	1/4	3/32	5/32	1/4
IPA-1670	1/2	1/4	1/8	3/16	11/32
IPA-1670-W	1/2	1/4	1/8	3/16	1/32
IPA-1308	1/2	1/4	1/8	5/32	1/4
IPA-1308-W	1/2	1/4	1/8	5/32	1/4
IPA-381	5/8	1/4	3/32	3/16	3/8
IPA-381-W	5/8	1/4	3/32	3/16	3/8
IPA-1343	5/8	5/16	5/32	5/32	7/16
IPA-1343-W	5/8	5/16	5/32	5/32	7/16
IPA-197	1	1/4	1/8	7/16	13/16
IPA-197-W	1	1/4	1/8	7/16	13/16
IPA-638-W	1	9/32	5/32	9/32	1/2
IPA-68-W	1 3/32	7/16	3/16	13/32	5/8

DOUGHNUT TOP



Part No.	A Outside Dia.	B Recess Width	C Bore Dia.	D Recess Depth	E Total Height
IPA-1059	1/2	9/32	1/8	3/32	3/16
IPA-1059-W	1/2	9/32	1/8	3/32	3/16
IPA-253	15/16	3/8	3/16	7/32	3/8
IPA-253-W	15/16	3/8	3/16	7/32	3/8
IPA-698	1	3/8	3/16	3/16	7/16
IPA-698-W	1	3/8	3/16	3/16	7/16
IPA-613	2 1/2	1 1/8	3/8	1/2	1
IPA-613	2 1/2	1 1/8	3/8	1/2	1

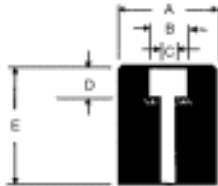


INVENTORY PLUS, INC.

200 SALINA STREET ~ SUITE 106 ~ LIVERPOOL, NY 13088
 315-451-7570 ~ fax 315-453-7337 ~ www.invplus.com

"W" Suffix Denotes Washer Insert

FLAT TOP



Part No.	A Outside Dia.	B Recess Width	C Bore Dia.	D Recess Depth	E Total Height
IPA-852-W	1/2	1/4	3/32	5/32	1/4
IPA-832	1/2	1/4	1/8	7/32	7/16
IPA-832-W	1/2	1/4	1/8	7/32	7/16
IPA-6115-W	1/2	5/16	5/32	3/16	3/8
IPA-1392	5/8	1/4	1/16	5/32	9/32
IPA-1392-W	5/8	1/4	1/16	5/32	9/32
IPA-15	23/32	1/4	1/8	7/32	7/16
IPA-15-W	23/32	1/4	1/8	7/32	7/16
IPA-1743-W	3/4	5/16	1/8	1/4	3/4
IPA-1388	3/4	3/8	1/8	5/32	3/8
IPA-1388-W	3/4	3/8	1/8	5/32	3/8
IPA-18	3/4	3/8	3/16	1/4	9/16
IPA-18-W	3/4	3/8	3/16	1/4	9/16
IPA-21	13/16	15/32	1/4	7/16	13/16
IPA-21-W	13/16	15/32	1/4	7/16	13/16
IPA-425	1	1/2	7/32	1/4	1/2
IPA-425-W	1	1/2	7/32	1/4	1/2
IPA-59-W	1	17/32	9/32	5/16	9/16
IPA-1487-W	1-1/4	1/4	1/4	3/4	1-7/8
IPA-1326	1-1/4	3/8	1/4	3/4	1-1/4
IPA-1326-W	1-1/4	3/8	1/4	3/4	1-1/4
IPA-1102-W	1-1/2	15/32	1/4	1/2	3/4
IPA-1019	1-1/2	1/2	3/16	11/32	5/8
IPA-1019-W	1-1/2	1/2	3/16	11/32	5/8
IPA-1019-2	1-1/2	3/4	5/16	11/32	5/8
IPA-1019-2W	1-1/2	3/4	5/16	11/32	5/8

